



## **JDisc Discovery 5.0**

### **Security Add-On**

## **Legal Notice**

JDisc GmbH shall not be liable for errors contained herein or for incidental or consequential damages in connection with the furnishing, performance, or use of this material. The information herein is subject to change without notice and is provided "as is" without warranty of any kind. The entire risk arising from the use of this information remains with the user. In no event shall JDisc GmbH be liable for any direct, consequential, incidental, special, punitive, or other damages whatsoever (including - without limitation - damages for loss of business profits, business interruption or loss of business information), even if JDisc GmbH has been advised of the possibility of such damages. The foregoing shall apply regardless of negligence or any other fault on behalf of either party and regardless of whether such liability sounds in contract, negligence, tort, or any other theory of legal liability, and notwithstanding any failure of essential purpose of any limited remedy. The limited warranties for JDisc GmbH products are exclusively set forth in the documentation accompanying such products. Nothing herein should be construed as constituting a further or additional warranty.

## **Copyright**

JDisc GmbH may hold patents or pending patent applications covering the subject matter of this document. The furnishing of this document does not imply any license for these patents. You can send license inquiries, in writing, to:

JDisc GmbH  
Kuppinger Weg 25  
D-71116 Gärtringen  
Germany

This document is protected by copyright. All rights are reserved. No part of this document may be photocopied, reproduced, or translated to another language without prior written consent of JDisc GmbH.

All other registered trademarks are the property of their respective owners.

© Copyright JDisc GmbH, 2023.





## Contents

1 Introduction.....	4
2 Share Permissions.....	5
2.1 Configuration.....	5
2.2 Shares Per Computer.....	6
2.3 Displaying All Shares.....	7
2.4 Shared Resources Per User.....	8
3 Open Source .....	10

# 1 Introduction

---

JDisc Discovery's Security Add-On extends JDisc Discovery's discovery with network share discovery and access permission related features:

1. Discovery of Network Shares
  - Windows computers - the discovery queries all share permissions and maps them to local / global user and user groups.
  - Unix/Linux computers running SAMBA
2. Displaying Effective Access Permissions

Specialized reports display all users that can access a network share either through direct access permissions on the share or indirectly by user group membership.

## 2 Share Permissions

---

The JDisc Discovery Security Add-On discovers all network shares of Windows and Unix/Linux computers. For Windows computers the discovery queries all access permissions and maps them to local/global users and user groups.

### 2.1 Configuration

To discover network shares and share permissions on Windows computers, JDisc Discovery requires administrative WMI or SMB protocol access.

Enable or disable the "Discover share" option in the *Data Collection | Standard* tab of the discovery configuration dialog.

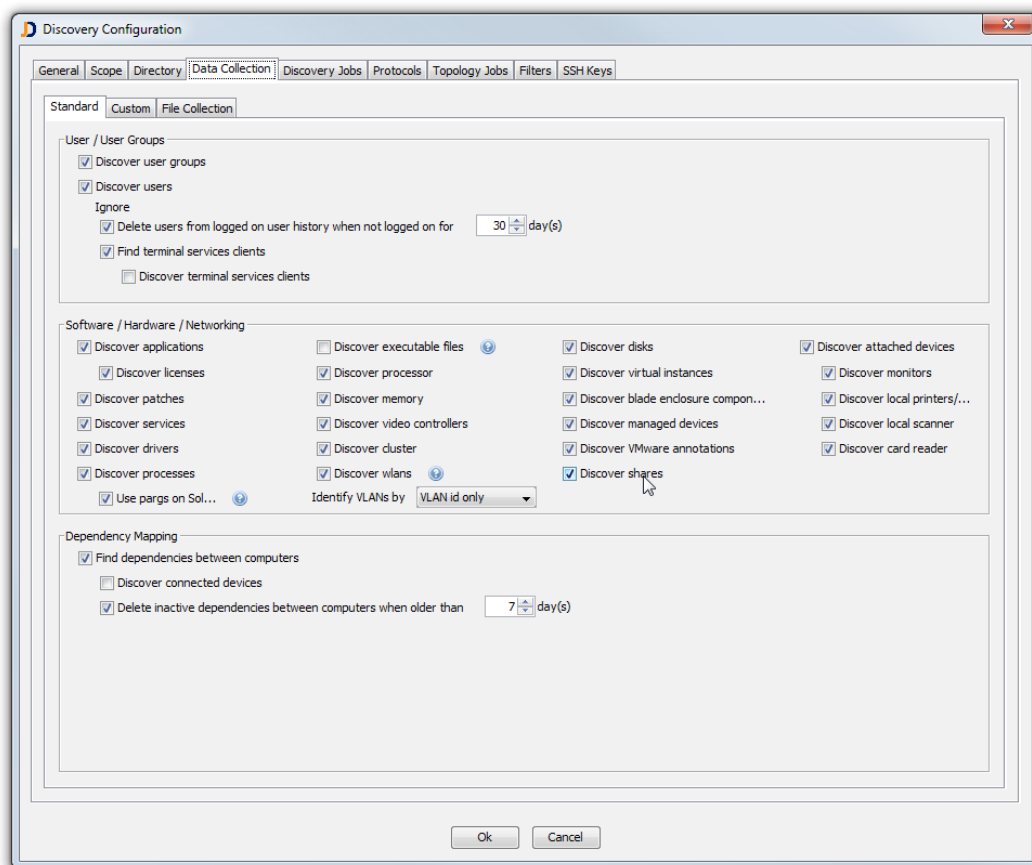


Figure: Enable/Disable Share Discovery

## 2.2 Shares Per Computer

The Device Details dialog displays network shares in the *Networking | Shares* tab. The Shares tab displays all network shares including the share permissions.

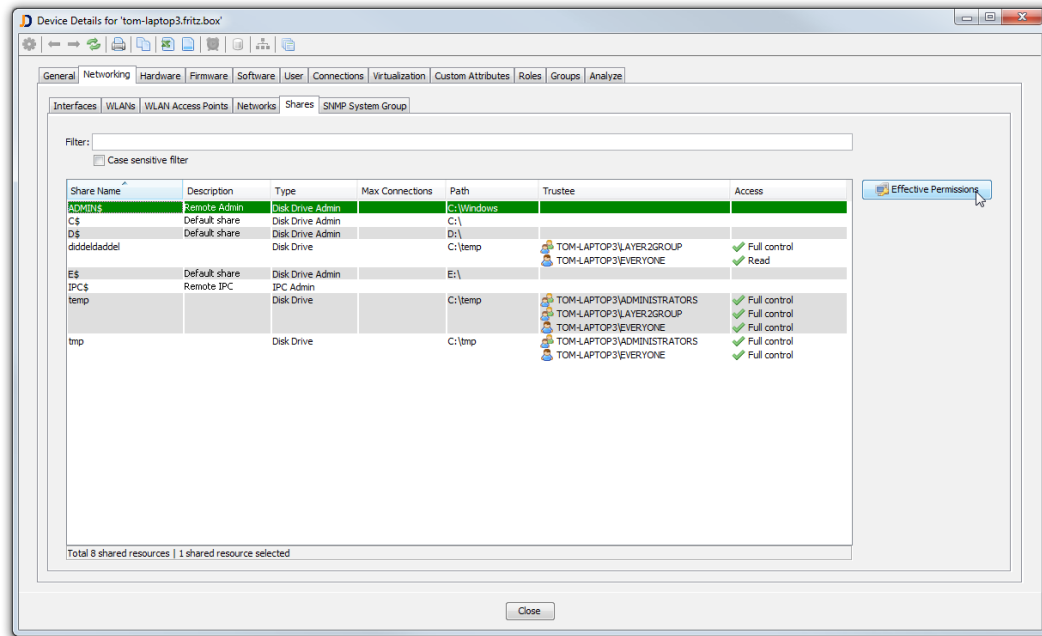


Figure: Network Shares per Computer

The *Effective Permissions* button displays all users that can access the selected share.



Access permissions can be granted either directly on the share or indirectly by user group membership.



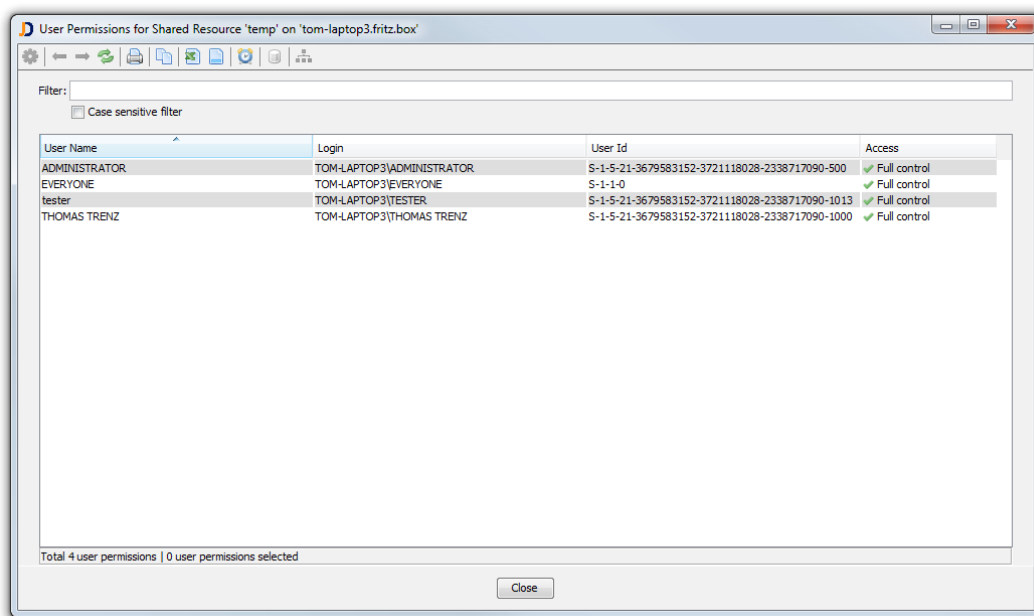


Figure: User Permissions per Shared Resource

## 2.3 Displaying All Shares

Open the *Shares* report from the *Networking* menu to display all devices and networks shares including their access permissions.

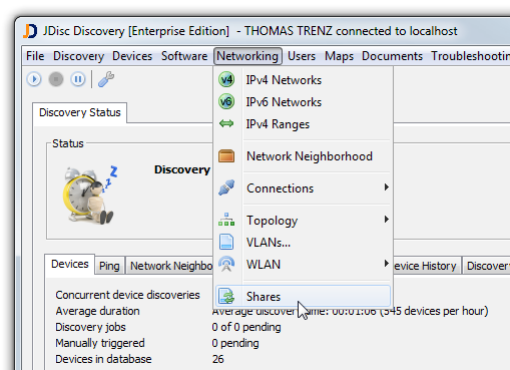


Figure: Global Shares Report

To display also administrative shares, check the "Include administrative shares" in the report's filter panel.

Name	IP Address	Type	Share Name	Share Type	Path	Description	Trustee	Access	Manufacturer
JDSCSERVER	192.168.178.74	VMware Instance	temp	Disk Drive	C:\temp		JDSC\Domain Users	✓ Read	
JDSCSERVER	192.168.178.74	VMware Instance	Users	Disk Drive	D:\Server\Folders\Users	Users	JDSCSERVER\ADMINISTRATORS	✓ Full control	
JDSCSERVER	192.168.178.74	VMware Instance	SYSTEM	Disk Drive	C:\Windows\system32\system32	System server share	JDSCSERVER\ADMINISTRATORS	✓ Full control	
JDSCSERVER	192.168.178.74	VMware Instance	Business	Disk Drive	D:\Share\Business		JDSCSERVER\ADMINISTRATORS	✓ Full control	
JDSCSERVER	192.168.178.74	VMware Instance	ShareTest	Disk Drive	D:\ShareTest		JDSCSERVER\ADMINISTRATORS	✓ Full control	
JDSCSERVER	192.168.178.74	VMware Instance	Software	Disk Drive	D:\Share\Software		JDSCSERVER\ADMINISTRATORS	✓ Full control	
JDSCSERVER	192.168.178.74	VMware Instance	NETLOGON	Disk Drive	C:\Windows\system32\logon\JDSC.local\SCRIPTS	Logon server share	JDSCSERVER\ADMINISTRATORS	✓ Full control	
JDSCSERVER	192.168.178.74	VMware Instance	Private	Disk Drive	D:\Share\Private		JDSCSERVER\ADMINISTRATORS	✓ Full control	
JDSCSERVER	192.168.178.74	VMware Instance	EveryoneFolder	Disk Drive	D:\ShareTest\EveryoneFolder		JDSCSERVER\ADMINISTRATORS	✓ Full control	
JDSCSERVER	192.168.178.74	VMware Instance	temp	Disk Drive	D:\Server\Folders\temp	temp	JDSCSERVER\ADMINISTRATORS	✓ Full control	
tom-laptop3 Fritz box	192.168.178.125	Laptop	temp	Disk Drive	C:\temp		JDSCSERVER\ADMINISTRATORS	✓ Full control	Apple
tom-laptop3 Fritz box	192.168.178.125	Laptop	temp	Disk Drive	C:\temp		JDSCSERVER\ADMINISTRATORS	✓ Full control	Apple
tom-laptop3 Fritz box	192.168.178.125	Laptop	temp	Disk Drive	C:\temp		JDSCSERVER\ADMINISTRATORS	✓ Full control	Apple

Figure: All Shared Resources



To display all *administrative shares*, check the "Include administrative shares" check-box.

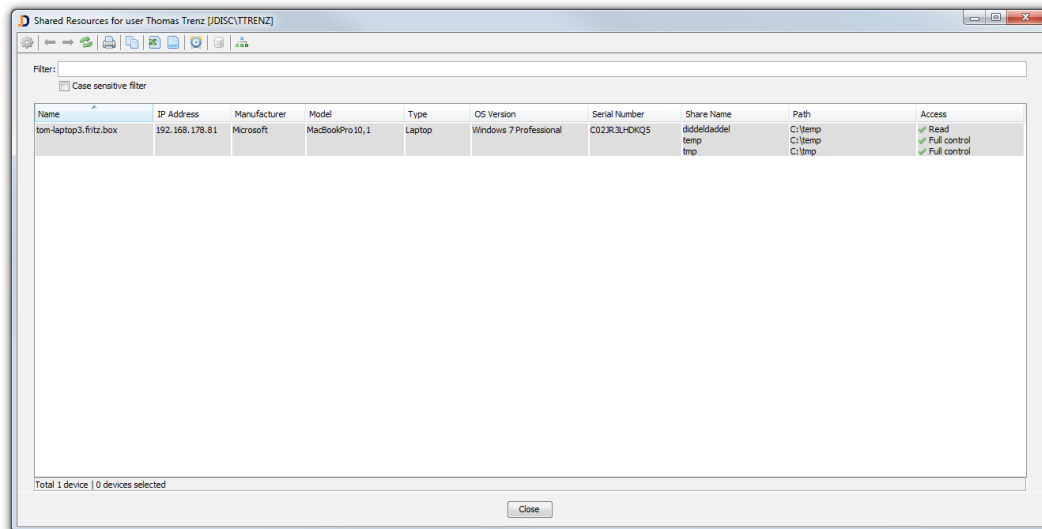
## 2.4 Shared Resources Per User

JDisc Discovery can display all network shares which the selected user has access to. Select the *Effective Permissions* context menu item or button to display all network shares that can be accessed by the selected user.

User Name	Login	Status	User Group Count	Canonical Name
Admin	JDISC\ADMIN		12	JDISC.local/Users/Admin
Administrator	JDISC\ADMINISTRATOR		4	JDISC.local/Users/Administrator
Discovery Search Mailbox	JDISC\SM_BE4521298E5645EB9		0	JDISC.local/Users/DiscoverySearchMailbox
Exchange Online-ApplicationAccount	JDISC\SM_100-468856MI_1KP		0	JDISC.local/Users/Exchange Online-ApplicationAccount
Guest	JDISC\GUEST		0	JDISC.local/Users/Guest
HealthMailbox1401c3e3dd134661bfcc1b700b0a0542	JDISC\SM_1009088643FB4F50A		0	JDISC.local/Users/HealthMailbox1401c3e3dd134661bfcc1b700b0a0542
HealthMailbox79732a72b1ce459982660481687d2a8b	JDISC\SM_CC56F858DBFA4288B		0	JDISC.local/Users/HealthMailbox79732a72b1ce459982660481687d2a8b
HealthMailboxcab64115c8d4fdacfacd4a289e688c	JDISC\SM_F3D98CE292174EF79		0	JDISC.local/Users/HealthMailboxcab64115c8d4fdacfacd4a289e688c
Karl Napp	JDISC\KARL_NAPP		1	JDISC.local/Users/Karl Napp
krbtgt	JDISC\KRBTGT		1	JDISC.local/Users/krbtgt
Microsoft Exchange	JDISC\SM_AE58A1FDADF0488AB		0	JDISC.local/Users/SystemMailbox(b558c2d16bbf4bae1077e375d6b4d82bf)
Microsoft Exchange	JDISC\SM_6373830237CF42689		0	JDISC.local/Users/SystemMailbox(e0dc1c19192e227b447817497bbd7831)
Microsoft Exchange Approval Assistant	JDISC\SM_FEB680A9E0BF460F9		0	JDISC.local/Users/SystemMailbox(1f05a91e23e227b447817497bbd7831)
Microsoft Exchange Federation Mailbox	JDISC\SM_F7B45DADCD534D249		0	JDISC.local/Users/FederatedEmail.4c1f4d1e23e227b447817497bbd7831
Microsoft Exchange Migration	JDISC\SM_773B37700F614D979		0	JDISC.local/Users/Migration.8f3e7716-201e23e227b447817497bbd7831
Share st. Tester	JDISC\SHARETESTER		0	JDISC.local/Germany/Development/Share st. Tester
test tester	JDISC\TESTER		0	JDISC.local/Germany/Development/test tester
Thomas Trentz	JDISC\THOMAS TRENTZ		8	JDISC.local/Users/Thomas Trentz
Thomas tt. Trentz	JDISC\THOMAS TRENTZ		0	JDISC.local/Germany/Development/Thomas tt. Trentz

Figure: Display network shares per user

The *Effective Permissions* menu item opens a new report that displays all network shares that are accessible for the selected user.



The screenshot shows a window titled "Shared Resources for user Thomas Trenz [JDISC\TTRENZ]". It contains a table with the following columns: Name, IP Address, Manufacturer, Model, Type, OS Version, Serial Number, Share Name, Path, and Access. The table lists two shares: "tom-laptop3.fritz.box" and "dideldeddel". The "Access" column shows "Read" and "Full control" permissions for both shares.

Name	IP Address	Manufacturer	Model	Type	OS Version	Serial Number	Share Name	Path	Access
tom-laptop3.fritz.box	192.168.178.81	Microsoft	MacBookPro10,1	Laptop	Windows 7 Professional	C02R3LHDKQ5	dideldeddel	C:\temp	Read
							temp	C:\temp	Full control

Total 1 device | 0 devices selected

Figure: Accessible networks shares per user

# 3 Open Source

---

This software includes software developed by various open-source projects and organizations as listed below. The corresponding files and components are copyright to the corresponding organization or vendor and all rights reserved. The software files and components distributed under the open-source licenses are distributed on an "AS IS" basis, WITHOUT WARRANTY OF ANY KIND, either express or implied. See the license of the corresponding project for specific rights and limitations under the license. Depending on the license, any product derived from the products may not be called with the name of the project nor may the name of the project appear in their name, without prior written permission. For written permission, please contact the corresponding project owner by visiting the corresponding project home page as listed below.

All license files can be found in the installation directory 'Licenses'.

- This product includes software developed by the Apache Foundation (<http://www.apache.org>). These are 'Axis', 'Commons Collections', 'Commons Net', 'CXF', 'log4j', and 'POI', 'Drools', 'log4j'.
- This product includes the 'SBLIM' WBEM implementation (<http://sourceforge.net/projects/sblim/files/sblim-cim-client2/>)
- This product includes icons from 'FAMFAMFAM' icon gallery 'SILK' (<http://www.famfamfam.com/lab/icons/silk>).
- This product includes Kai Toedter's 'Jcalendar' (<http://www.toedter.com/en/jcalendar/index.html>).
- This product includes the JUNG layout library (<http://jung.sourceforge.net>).
- This product includes the COLT numeric library (<http://acs.lbl.gov/~hoschek/colt>).
- This product uses the Postgres database (<http://www.postgresql.org>).
- This product uses SNMP4J (<http://www.snmp4j.org>).
- This product uses the Ganymed SSH library (<http://www.ganymed.ethz.ch/ssh2>).
- This product uses the drools rule engine (<http://jboss.org/drools>).
- This product uses the janino compiler (<http://www.janino.net>).
- This product uses Jython (<http://www.jython.org/Project>).
- The product calls the dmidecode binary (<http://www.nongnu.org/dmidecode>).  
Find the source code in the 'sources' directory.
- This product uses icons from 'Crystal Clear' ([http://commons.wikimedia.org/wiki/Crystal\\_Clear](http://commons.wikimedia.org/wiki/Crystal_Clear)).
- This product uses the 'PUTTY' ssh client.
- This product uses the dom4j library (<http://dom4j.sourceforge.net/dom4j-1.6.1>).
- This product uses the Jaxen library (<http://jaxen.org/>)

- This product uses the Jcalendar library (<http://toedter.com/jcalendar/>).
- This product uses the Jdom library (<http://www.jdom.org/>).
- This product uses the saxpath library (<http://www.saxpath.org/>).
- This product uses the miglayout library (<http://www.miglayout.com/>).
- This product uses the taskdialog library (<https://code.google.com/p/oxbow/>).
- This product uses the vjjava library (<http://vjjava.sourceforge.net/>).
- This product uses the dnsjava library (<http://www.dnsjava.org/>).
- This product uses the trove library (<http://trove.starlight-systems.com/>).