



JDisc Discovery 5.0

Installation Guide

Legal Notice

JDisc GmbH shall not be liable for errors contained herein or for incidental or consequential damages in connection with the furnishing, performance, or use of this material. The information herein is subject to change without notice and is provided "as is" without warranty of any kind. The entire risk arising out of the use of this information remains with recipient. In no event JDisc GmbH shall be liable for any direct, consequential, incidental, special, punitive, or other damages whatsoever (including without limitation, damages for loss of business profits, business interruption or loss of business information), even if JDisc GmbH has been advised of the possibility of such damages. The foregoing shall apply regardless of the negligence or other fault of either party and regardless of whether such liability sounds in contract, negligence, tort, or any other theory of legal liability, and notwithstanding any failure of essential purpose of any limited remedy. The limited warranties for JDisc GmbH products are exclusively set forth in the documentation accompanying such products. Nothing herein should be construed as constituting a further or additional warranty.

Copyright

JDisc GmbH may have patents or pending patent applications covering subject matter described in this document. The furnishing of this document does not give you any license to these patents. You can send license inquiries, in writing, to:

JDisc GmbH
Kuppinger Weg 25
D-71116 Gärtringen
Germany

This document is protected by copyright. All rights are reserved. No part of this document may be photocopied, reproduced, or translated to another language without prior written consent of JDisc GmbH.

All other registered trademarks belong to their respective companies.

© Copyright JDisc GmbH, 2022.

Contents

1 Installation.....	3
1.1 Prerequisites.....	3
1.1.1 Hardware Prerequisites.....	3
1.1.2 Software Prerequisites.....	3
1.2 Update And Installation.....	4
1.2.1 Upgrade From A Previous Version.....	4
1.2.2 Server installation.....	5
1.2.3 Silent Client Only Installation.....	5
2 Licensing.....	6
2.1 Requesting A License.....	6
2.2 Installing The License.....	7
3 Open Source	8

1 Installation

This chapter explains JDisc Discovery's installation prerequisites and program.

1.1 Prerequisites

JDisc Discovery requires certain hardware attributes and operating system versions.

1.1.1 Hardware Prerequisites

The computer to run JDisc Discovery should fulfill the hardware requirements below.

Device Count	Processor	Memory	Disk Space
0 – 1000	> 1.6 GHz	> 4 GB	2 GB
1000 – 10000	> 2 GHz	> 8 GB	8 GB
> 10000	> 2 GHz	> 16 GB	50 GB

Note: JDisc Discovery runs on slower hardware with less memory, but will become significantly slower (especially the reporting).

1.1.2 Software Prerequisites

JDisc Discovery can run on the following operating systems. JDisc Discovery is a 64 bit product so it requires a 64 bit operating system.

- Windows Vista¹, Windows 7, Windows 8, Windows 8.1 or Windows 10
- at least Windows Server 2008 (R2)



Running JDisc Discovery on a client operating system, such as Windows Vista (before SP2) causes incomplete discovery results and a slow discovery performance!

There are patches on the Internet that extend the connection limit (search for 'XP connection limit' or 'Vista connection limit'). JDisc Discovery can also run on Windows XP and Windows Vista if the

¹ Note: The connection limit that has been introduced with Windows XP SP2, Windows Vista, and Windows 7 is intended to slow down spreading of viruses over the network.

above patch is installed. However keep in mind that JDisc is not responsible for any damage resulting from installing the connection limit patch!

Make sure the local firewall is disabled on the JDisc Discovery computer. Otherwise the discovery might be affected.

1.2 Update And Installation

JDisc Discovery installs an embedded database server (Postgres version 10.1.3 – see <http://www.postgresql.org>) in addition to its server and client applications. Because of that there is no need to install and maintain a dedicated database server.

- Expand the download ZIP file and run the setup.exe command in order to start the discovery.

The installation package contains the server and client applications. The installation wizard allows these install options:

- Client only
- Server and client

1.2.1 Upgrade From A Previous Version

The setup procedure detects earlier installations and can update the installation including the database migration starting with JDisc Discovery 3.4.



We always recommend to perform a manual database archive prior to the upgrade installation.

How to create an archive:

1. Open the JDisc Discovery user interface and choose from the menu *Administration » Stop Application*.
2. Archive your database (including passwords) with *Administration » Database » Archive*.



The current license file stays valid when installing a new JDisc Discovery build with the same version number!



Installing a new JDisc Discovery version requires a new license file!

1.2.2 Server Installation

When installing the server, JDisc Discovery's installation wizard will prompt for the embedded database server configuration. Enter the database server port, the database admin password, and the database read-only password in the database configuration dialog. Due to a limitation in the used database server **don't use spaces or single quotes in the passwords!**

Finally, choose whether you would like to access the database remotely.²

The installation program creates a new database named 'inventory', a database admin user named 'postgres' and a database read-only user 'postgresro'.

1.2.3 Silent Client Only Installation

If you would like to include the JDisc Discovery client installation in your software distribution, then you might use the following command line for the silent installation:

```
msiexec /i "JDisc Discovery 5.0.msi" ADDLOCAL=Client /quiet
```

² Local databases are more secure than remotely accessible databases.

2 Licensing

When installing JDisc Discovery the installation program creates an evaluation license, which allows discovery of up to 25 devices.

JDisc Discovery licenses are locked to hardware and operating system attributes of the computer where JDisc Discovery is installed.

2.1 Requesting A License

After purchasing a license,

1. Open the “*License Info...*” dialog from JDisc Discovery's *Help* menu to create a license request file.

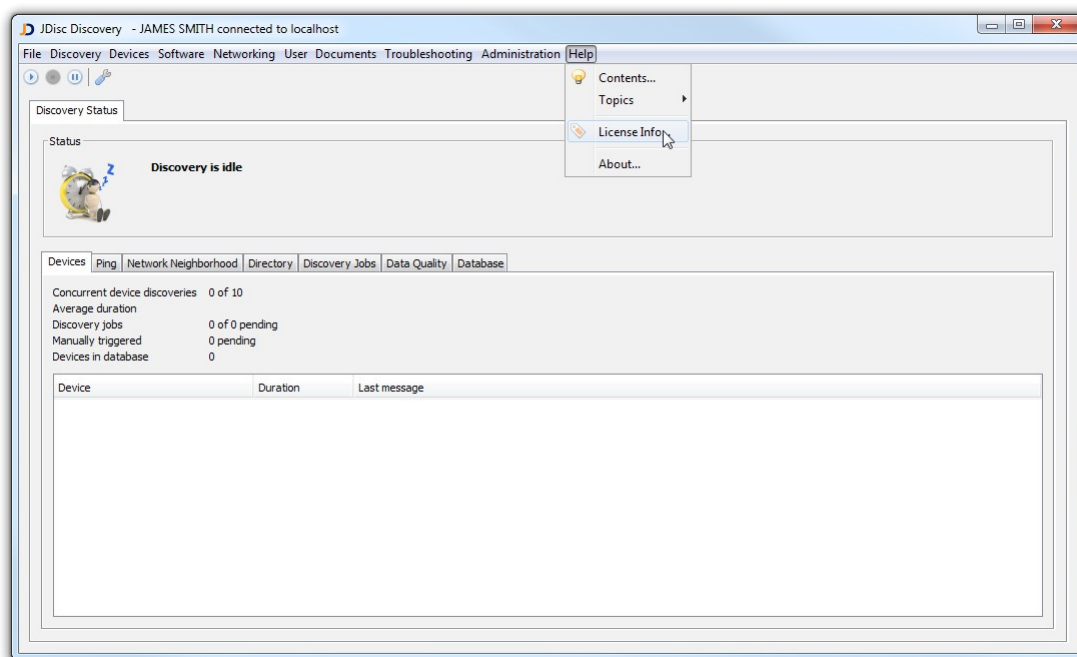


Fig: Open the license dialog

2. On the “*License Information*” dialog-box, click “*Request License*” to create a license request file.
3. Choose a directory to save the license request file using the “*Save License Request File*” dialog-box and click “*Save*” .
4. Finally submit the license request file on the JDisc homepage.

2.2 Installing The License

When you have submitted the license request file on JDisc's homepage, JDisc will validate your license request, create a license file called '*license.txt*' and return it to you.

Follow the instructions below to install your license:

1. Copy the '*license.txt*' file into JDisc Discovery's installation directory.
2. Open the Windows Control Panel > Administrative Tools > Services and restart the 'JDisc Discovery server' service.
3. Check the license status from the *Help* » *License Info* menu.

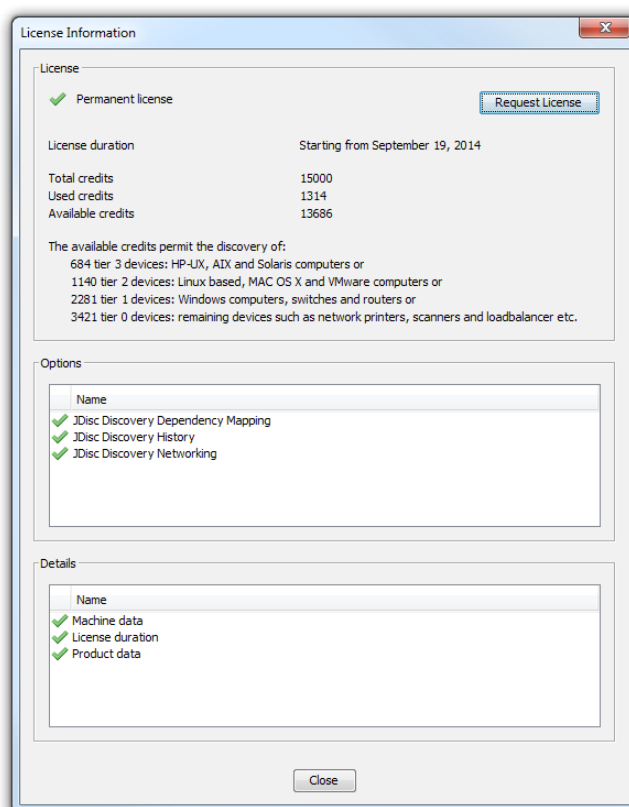


Fig: A valid permanent license



Restart the 'JDisc Discovery server' service from the Windows *Control Panel* » *Administrative Tools* to activate the new license file.

Check the license status from the *Help* » *License* menu.

3 Open Source

This software includes software developed by various open-source projects and organizations as listed below. The corresponding files and components are copyright to the corresponding organization or vendor and all rights reserved. The software files and components distributed under the open-source licenses are distributed on an "AS IS" basis, WITHOUT WARRANTY OF ANY KIND, either express or implied. See the license of the corresponding project for specific rights and limitations under the license. Depending on the license, any product derived from the products may not be called with the name of the project nor may the name of the project appear in their name, without prior written permission. For written permission, please contact the corresponding project owner by visiting the corresponding project home page as listed below.

All license files can be found in the installation directory 'Licenses'.

- This product includes software developed by the Apache Foundation (<http://www.apache.org>). These are 'Axis', 'Commons Collections', 'Commons Net', 'CXF', 'log4j', and 'POI'.
- This product includes the 'SBLIM' WBEM implementation.
- This product includes icons from 'FAMFAMFAM' icon gallery 'SILK' (<http://www.famfamfam.com/lab/icons/silk>).
- This product includes Kai Toedter's 'Jcalendar' (<http://www.toedter.com/en/jcalendar/index.html>).
- This product includes the JUNG layout library (<http://jung.sourceforge.net>).
- This product includes the COLT numeric library (<http://acs.lbl.gov/~hoschek/colt>).
- This product uses the Postgres database (<http://www.postgresql.org>).
- This product uses SNMP4J (<http://www.snmp4j.org>).
- This product uses the trilead SSH library (http://www.trilead.com/Products/Trilead_SSH_for_Java).
- This product uses the drools rule engine (<http://jboss.org/drools>).
- This product uses the janino compiler (<http://www.janino.net>).
- This product uses Jython (<http://www.jython.org/Project>).
- The product calls the dmidecode binary (<http://www.nongnu.org/dmidecode>). Find the source code in the 'sources' directory.
- This product uses icons from 'Crystal Clear' (http://commons.wikimedia.org/wiki/Crystal_Clear).
- This product uses the 'PUTTY' ssh client.